

# **ROLL SUPPORTS**

ROLL SUPPORTS	
Sheet	<b>A</b>

## FEATURES AND PARTICULARS

The roll supports are very important elements in the piping and pipeline installations, that have very high vertical weight force, also for insulated pipes covered and in all other situations where is necessary to eliminate the friction on the support's point, caused from pipe's axial dilatation.

The roll's body and the support are build in zinc carbon steel; the pivot that assembly all parts, is in satinless steel AISI 304, with P.T.F.E. (polytetrafluoretylene) bronzine with very low static/dynamic friction.

Our roll supports are made in different models that depend to the pipe's weight and nominal diameter; we have also some model, that have lateral movement of 60 millimeters, for lateral's compensations or pipe's lateral movements.

Following you can find the table for max roll supports's installations distance, in reference of pipe's diameters and the working fluid. Also you can find the standard roll support's dimension tables.

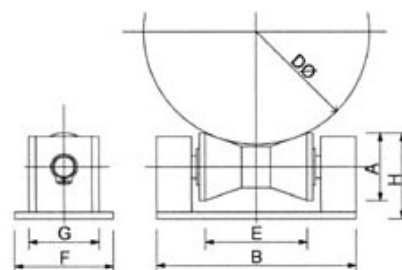
### TABLE FOR MIN. INSTALLATIONS'S DISTANCE OF ROLL SUPPORTS.

DN	Inch	Pipe with liquid	Pipe with steam	Insulated Pipe with liquid		Insulated Pipe with steam	
		fino a 160°C	fino a 160°C	fino a 315°C	oltre 315°C	fino a 315°C	oltre 315°C
15	½"	2,5 m	3,0 m	2,2 m	1,7 m	2,8 m	2,5 m
25	1"	3,0 m	3,5 m	2,5 m	2,0 m	3,1 m	2,8 m
32	1 ¼"	3,5 m	4,0 m	3,1 m	2,6 m	3,6 m	3,1 m
50	2"	4,0 m	4,5 m	3,6 m	3,2 m	4,1 m	3,8 m
65	2 ½"	4,3 m	5,5 m	4,1 m	3,5 m	5,1 m	4,5 m
80	3"	4,5 m	6,0 m	4,5 m	4,0 m	5,5 m	4,8 m
100	4"	5,0 m	6,0 m	4,7 m	4,2 m	5,6 m	5,1 m
125	5"	5,5 m	6,5 m	5,5 m	4,8 m	6,2 m	5,8 m
150	6"	6,0 m	7,5 m	5,8 m	5,0 m	7,1 m	6,3 m
175	7"	6,5 m	8,0 m	6,1 m	5,3 m	7,6 m	6,8 m
200	8"	7,0 m	8,5 m	6,5 m	5,6 m	8,0 m	7,2 m
250	10"	7,5 m	10,0 m	7,5 m	6,5 m	9,5 m	8,5 m
300	12"	8,0 m	10,5 m	7,9 m	7,0 m	10,2 m	9,0 m
350	14"	9,0 m	11,5 m	8,6 m	7,6 m	10,8 m	9,6 m
400	16"	9,5 m	12,5 m	9,0 m	8,2 m	11,8 m	10,5 m
450	18"	10,0 m	13,5 m	9,5 m	8,5 m	12,5 m	11,1 m
500	20"	10,5 m	14,0 m	10,2 m	9,1 m	13,2 m	11,6 m
600	24"	11,5 m	15,0 m	11,0 m	9,6 m	14,3 m	12,6 m

### TECHNICAL / DIMENSIONAL TABLES

#### ROLL SUPPORT MODEL "D":

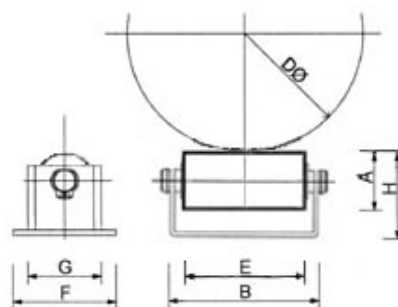
- **Roll:** Zinc carbon steel
- **Support:** Zinc carbon steel
- **Pivot:** Stainless steel AISI 304
- **Bronzine:** Sinterized with P.T.F.E.



Support's model	Pipe diameter	Vertical load	A	B	E	F	G	H
code	mm	Kg	mm	mm	mm	mm	mm	mm
D 50	25 ÷ 100	500	40	105	43	57	45	55
D 100	80 ÷ 180	1000	48	142	75	71	54	62
D 175	175 ÷ 300	2500	86	184	144	184	118	93

#### ROLL SUPPORT MODEL "L":

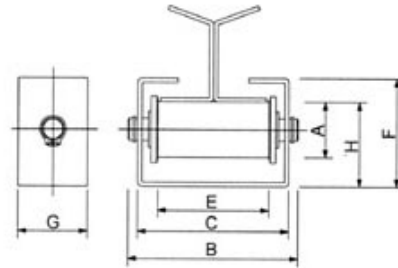
- **Roll:** Zinc carbon steel
- **Support:** Zinc carbon steel
- **Pivot:** Stainless steel AISI 304
- **Bronzine:** Sinterized with P.T.F.E.



Support's model	Pipe diameter	Vertical load	A	B	E	F	G	H
code	mm	Kg	mm	mm	mm	mm	mm	mm
L 40	0 ÷ 100	600	22	82	70	Vedi G	36	30
L 60	50 ÷ 150	600	22	110	97	Vedi G	36	30
L 100	80 ÷ 250	1000	46	110	80	98	66	58

**ROLL SUPPORT MODEL “S”:**

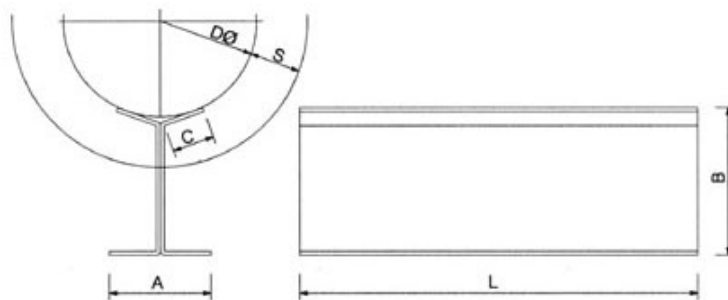
- **Roll:** Zinc carbon steel
- **Support:** Zinc carbon steel
- **Pivot:** Stainless steel AISI 304
- **Bronzine:** Sinterized with P.T.F.E.



Support's model	Adding support	Vertical load	A	B	C	E	F	G	H
code	code	Kg	mm	mm	mm	mm	mm	mm	mm
S 60	SL 60	600	21	90	82	64	40	35	30
S 75	SL 75	1000	40	110	95	66	77	50	61
S 100	SL 100	1500	52	153	135	103	100	65	76
S 120	SL 120	2500	68	212	190	146	130	90	100

**ADDING SUPPORT “SL” FOR ROLL SUPPORT MODEL “S”:**

- **Support:** Zinc carbon steel

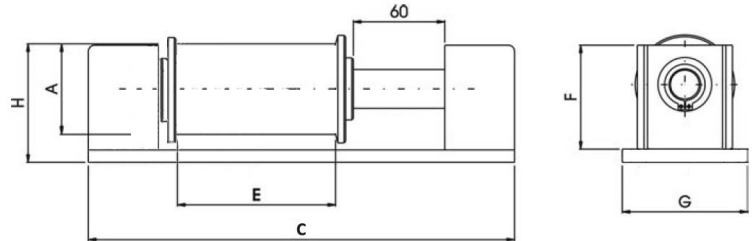


Adding support model	Pipe diameter	Vertical load	S	L	A	B	C
code	mm	Kg	mm	mm	mm	mm	mm
SL 60	0 ÷ 80	350	40	200	60	80	24
SL 75	50 ÷ 180	600	60	300	60	95	33
SL 100	100 ÷ 300	1000	80	300	92	125	58
SL 120	300 ÷ 500	2000	110	300	135	170	94

ROLL SUPPORTS	
Sheet	<b>D</b>

**SUPPORTO A RULLO A SCORRIMENTO LATERALE TIPO “SS”:**

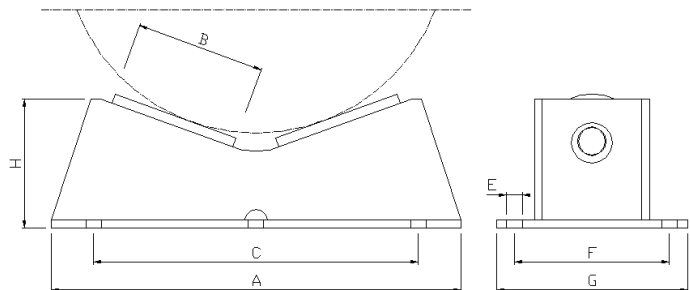
- **Roll:** Zinc carbon steel
- **Support:** Zinc carbon steel
- **Pivot:** Stainless steel AISI 304
- **Bronzine:** Sinterized with P.T.F.E.
- **Lateral Movement:** 60 mm



Support's model	Adding support	Vertical load	A	C	E	F	G	H
code	code	Kg	mm	mm	mm	mm	mm	mm
SS 60	SL 60	600	28	194	62	36	60	40
SS 75	SL 75	1000	46	228	66	53	70	58
SS 100	SL 100	1500	58	275	103	64	80	72

**ROLL SUPPORT MODEL “C”:**

- **Rolls:** Zinc carbon steel
- **Supports:** Zinc carbon steel
- **Pivots:** Stainless steel AISI 304
- **Bronzine:** Sinterized with P.T.F.E.



Support's model	Pipe diameter	Vertical load	A	B	C	E	F	G	H
code	mm	Kg	mm	mm	mm	mm	mm	mm	mm
C 800	350 ÷ 800	8000	424	118	350	12	125	152	110